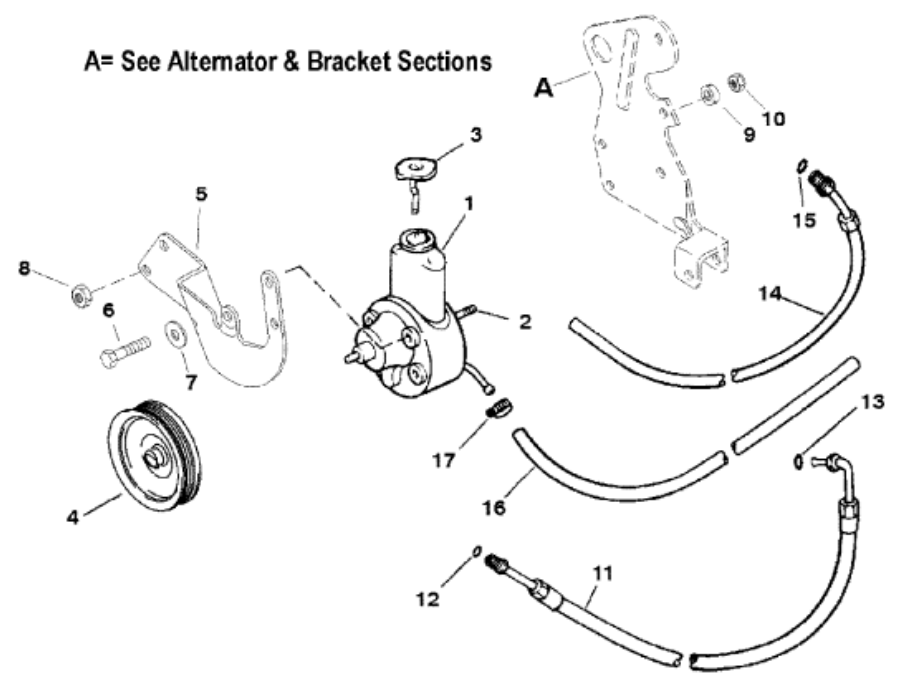


Parts List



A= See Alternator & Bracket Sections

Ref	Class	Part	Description	Qty	Comment	Footnote
1		16792A39	PUMP ASSEMBLY	1		
2	16	41877	STUD	2		
3	36	95805	CAP	1		
4		861578	PULLEY (5-3/4" METAL)	1		7
5		807751T	BRACE	1	SN# 0L618999 & Below	
5		862082T	BRACE, Power Steering	1	SN# 0L619000 & Up	
6	10	40001188	SCREW, (M10 x 20)	3		
7	12	34714	WASHER	3		
8	11	32219	NUT, (.375-16)	3		
9	23	90520	SPACER, (.75 Outside Diameter X	1		
10	11	90517	NUT, (M10)	1		
11	32	806222	HOSE (FITTINGS ON BOTH ENDS	1		
12	25	89879	O-RING, (.301 x .064)	1		
13	25	806232	O-RING, (.239 x .064)	1		
14	32	806221	HOSE ASSEMBLY, (84.00 Inches	1		
15	25	89879	O-RING, (.301 x .064)	1		
16	32	52519	HOSE, (53.00 Inches Bulk), Pump	1		
17	54	815504	CLAMP, Worm Gear	3		
NS	19	807992	COVER, Hose Clamp End	AR		